

ALLEN REAVES SURVEY
A - 656

VOL. 4127 PG. 389
H.C.D.R.

A.R. MILLER SURVEY
A - 1627

VOL. 4540 PG. 410
H.C.D.R.

PARTITION MAP
VOL. 75 PG. 1
H.C.M.R.

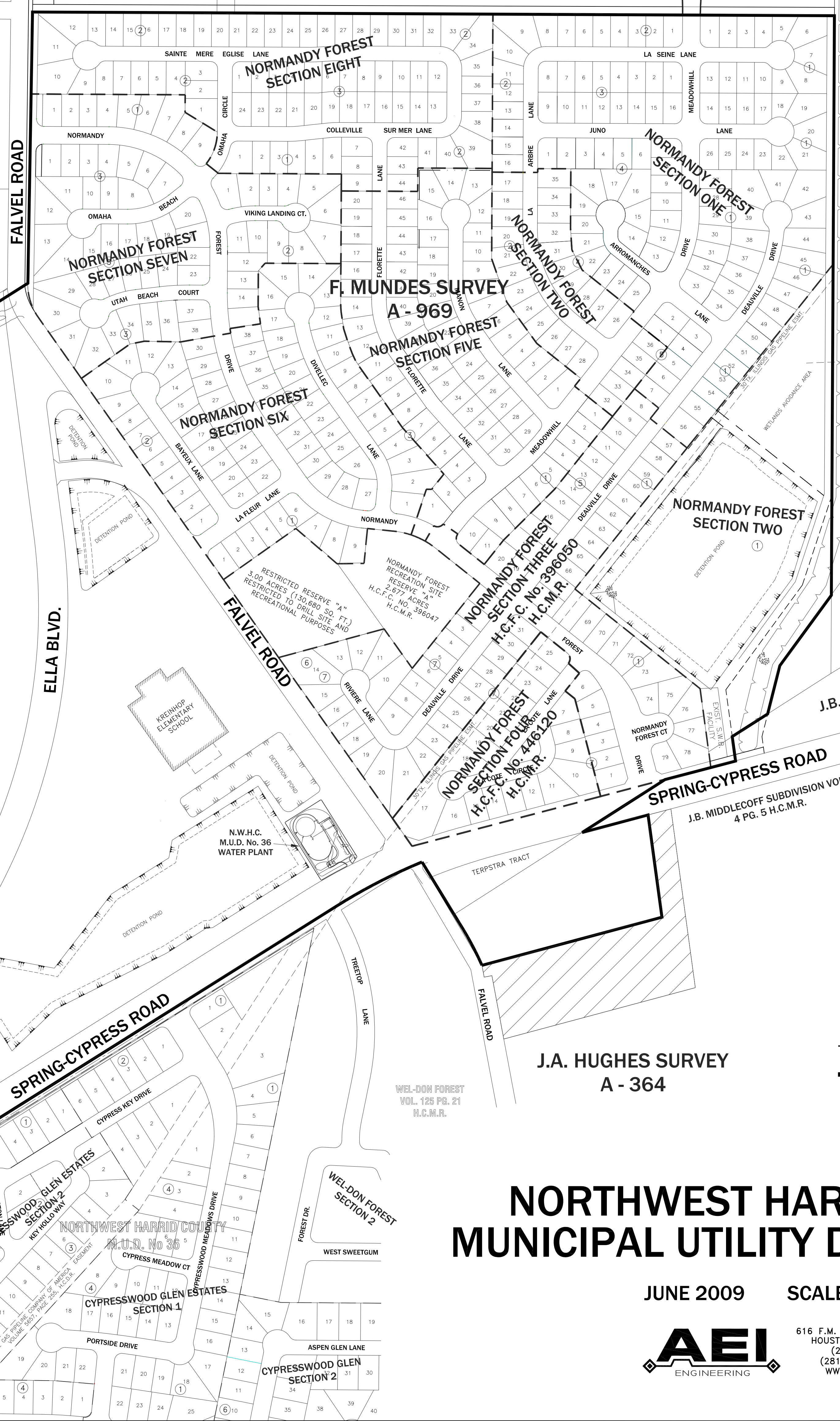
VOL. 4127 PG. 389
H.C.D.R.

H.T.&B.R. R.R. CO. SURVEY
A - 415

BRIDGESTONE SEC.
5 VOL. 306 PG. 116
H.C.M.R.

L.A. FALVEL SURVEY
A - 265

A.M. McCASLAND SURVEY
A - 572



N.W.H.C.
M.U.D. No. 36
WATER PLANT

J.A. HUGHES SURVEY
A - 364

WEL-DON FOREST
VOL. 125 PG. 21
H.C.M.R.

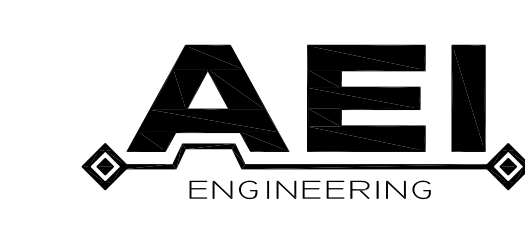
J.B. MIDDLECOFF SUBDIVISION VOL.
4 PG. 5 H.C.M.R.

LEGEND



NORTHWEST HARRIS COUNTY MUNICIPAL UTILITY DISTRICT No. 28

JUNE 2009 SCALE: 1" = 200'



616 F.M. 1960 W., SUITE 250
HOUSTON, TEXAS 77090
(281) 350-7027
(281) 350-7035 FAX
WWW.AEIENR.COM